

# Sarwah Homes



# Serveware Catalogue



- **Melamine Dinner Sets:**
  - **34 Pieces Melamine Dinner Sets**
  - **24 Pieces Melamine Dinner Sets**
  - **44 Pieces Melamine Dinner Sets**
- **Individual Items**
- **Opalware Dinner Sets:**
  - **28 Pieces Opalware Dinner Sets**
  - **40 Pieces Opalware Dinner Sets**
- **Trays**
- **Melamine Trays**
- **Kitchen Utensils**

1. Opt for Serveware made of high grade non-toxic (lead free) enamels making it extremely safe to use for daily consumption.

2. Healthy Serveware products made out of opal glass, are non-porous in nature which means it does not absorb food particles curtailing bacteria formation, & makes your dinnerware 100% food safe & hygienic.

## Benefits of eating in quality Serveware

3. Serveware which is resistant to wear and tear and does not scratch easily is a sign of good quality and safe-to-use product.

4. Opt for Serveware made with tempering - a complex process which makes product three times stronger than normal glass and also make products highly heat resistant.

## A top-down view of a set table for a meal. The table is covered with a light-colored tablecloth featuring a repeating floral pattern. There are six white plates with a delicate floral design around the rim. Several white cups and saucers are scattered across the table. In the center, there is a large bowl filled with a dark, chunky food item, possibly a stew or a salad. To the left, a plate holds several slices of salami and a piece of flatbread. Another plate shows a stack of flatbread. Various other items are on the table, including a small bottle of oil, a jar of jam, a small bowl of fruit (oranges), and a small container of butter. The table is set for a meal, with the items arranged in a way that suggests a shared dining experience.

# Melamine Dinner Sets

## HOW IS MELAMINE MADE?

Each manufacturer produces melamine crockery in a slightly different way. That said, melamine crockery is made by combining melamine with setting agents and added compounds to produce melamine resin. This happens in two separate heated production processes.

Melamine resin is a combination of melamine and preserving and setting agents which make sure that crockery is as strong and durable as possible. Fundamentally, melamine is made of carbon, hydrogen and nitrogen, though exact compositions vary between manufacturers.

# Melamine Dinner Sets

## WHAT ARE THE ADVANTAGES OF MELAMINE CROCKERY?

There's huge benefits to swapping traditional crockery for melamine alternatives, making it a smart swap for any commercial catering environment.

- 1) Hardwearing
- 2) Lightweight Design
- 3) Heat Resistance
- 4) Appearance
- 5) Dishwasher Safe

Here are the top benefits of choosing melamine dinnerware.

1. Durable and virtually unbreakable
2. Looks and feels like fine porcelain and ceramic.
3. Best quality food-safe plastic and BPA free
4. Perfect for indoor and outdoor entertaining
5. Elegant yet affordable
6. Easy to clean and dishwasher safe
7. Comes in stylish colors and unique patterns.

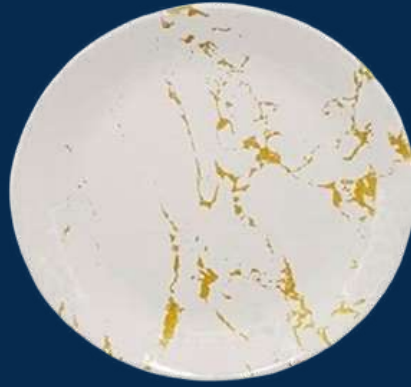


# Melamine Dinner Sets

## 34pcs Melamine Dinner Sets

FULL PLATE- 6 PIECES  
SOUP PLATE- 6 PIECES  
QUARTER PLATE- 6 PIECES  
VEG BOWL- 6 PIECES  
SOUP BOWL- 6 PIECES  
SERVING BOWL- 2 PIECES  
SERVING SPOON 2 PIECES

# 34pcs Melamine Dinner Sets



116-33-43

MARBLE W/GOLD



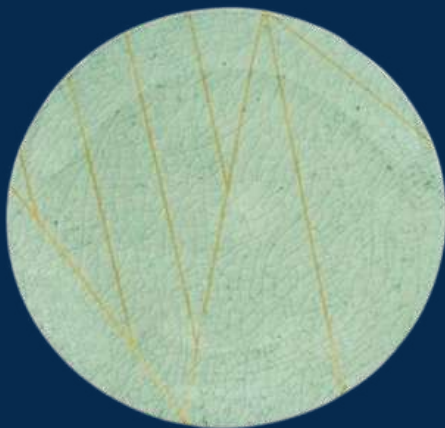
116-33-41

FADED OCEAN



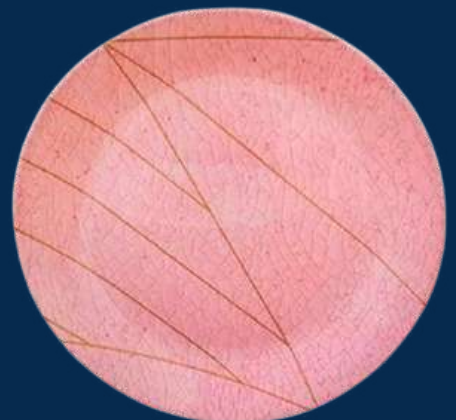
116-33-42B

PARCHED BLUE



116-33-42G

PARCHED GREEN



PARCHED PINK



6792



6802



6740



GOLD ARABIC

DFZ-642-53-N-Gold



ROSE

DFS-584-30



GOLD FLOWER

DFZ-642-01-Gold



ZEBRA

DFS-584-08-ZEB



# Melamine Dinner Sets

## 28 Pcs Dinner Sets

ECO URMI DINNER PLATE- 6 PIECES

ECO URMI DINNER PLATE- 6 PIECES

RIM SOUP PLATE/

ROUND VEG BOWL- 6 PIECES

ROUND SOUP BOWL- 6 PIECES

ROUND OPEN BOWL- 2 PIECES

SERVING SPOON - 2 PIECES



MORNING GLORY

119-24-05



PEACH FLOWER

119-24-04



MARBLE GOLD

119-24-06



VINTAGE LEAVES

119-24-02



FLORET

118-24-02 - 506383



B.DIAMOND

118-24-02



MORN BLUE

118-24-01 - 426383



MARIGOLD

118-24-01 - 426380



LAVENDER

119-24-01



AUTUMN



PAISLEY



# Melamine Dinner Sets

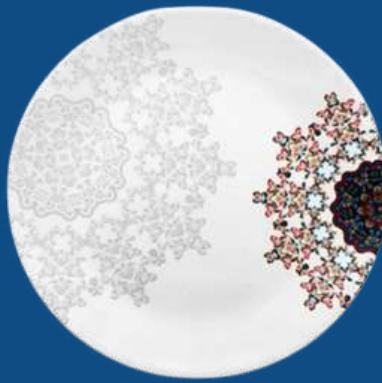
## 44 Ps Dinner Set

10.5" ECO URMI DINNER PLATE-	6 PIECES
7.5" ECO URMI DINNER PLATE-	6 PIECES
9" RIM SOUP PLATE -	6 PIECES
4"ROUND VEG BOWL-	6 PIECES
4.5" ROUND SOUP BOWL-	6 PIECES
8.25" ROUND OPEN BOWL-	2 PIECES
8.25" ROUND OPEN BOWL W/LID-	2 PIECES
10.5" RICE SERVER -	1 PIECE
12" OVAL SERVING PLATTER-	1 PIECE
9.75" SERVING SPOON -	2 PIECES
5.75" SOUP SPOON -	6 PIECES



BEGONIA

119-24-07



ATHETIC

119-24-09



BLUE BELL

119-24-08



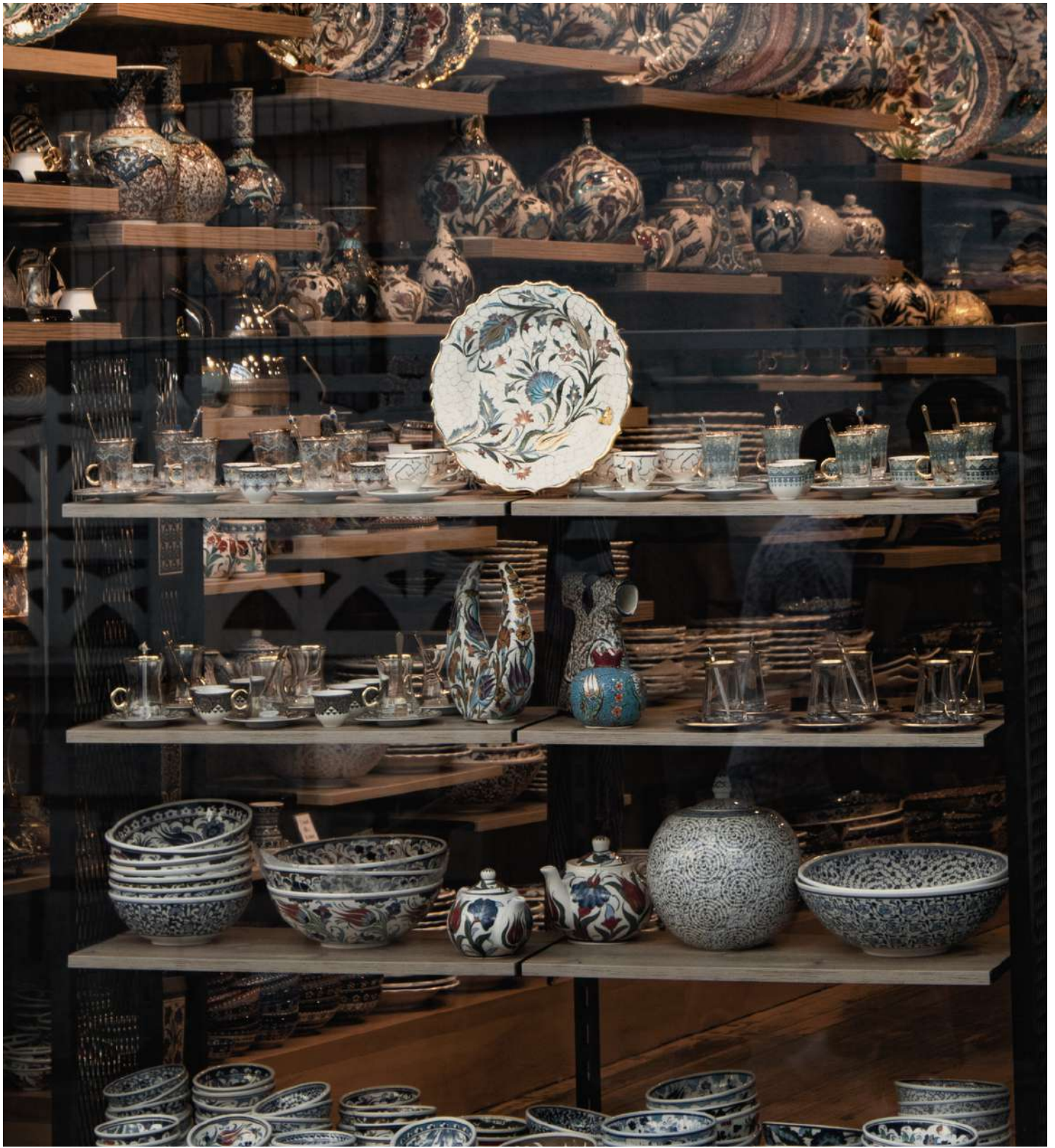
PASTEL LEAVES



FLORAL



# Individual Crockery Items



# Individual Items



8.5"Soup Bowl



9.75"Salad Bowl



9"Soup Plate  
10"Soup plate



Bucket



Dinner Plate



7"Serving Bowl



Serving Spoon



4.5" Veg Bowl  
3.7" Katori

# Individual Items



DIVINE



WHITE



M.BLUE



MELAIN



M.GREY



ORCHID WHITE



FAUX



PINK



BLACK



# House of Sakha



# Opalware Dinner Sets



# Opalware Dinner Sets

## WHAT IS OPALWARE ?

- Opalware is manufactured under the most advanced German technology as per European standards and is made from extra strong glass for durability.
- Opalware is made from strong toughened glass, the opal glass which makes it unbreakable. Opalware is able to last longer even with regular use.
- Opalware material means material that is 100 percent vegetarian, bone ash-free, and made of green material.
- Opalware material is made from tempered glass which makes it durable and heat resistant.

# Opalware Dinner Sets

## IS OPALWARE SAFE FOR HEALTH?

Opalware set is safe for health because of the opal glass which they are made out of.

Opal glass is the safest material used to manufacture dinnerware sets for everyday use.

Opalware sets are made out of opal glass and are non-porous which means it does not absorb food particle and is bacterial-free, which makes the dinnerware 100 percent safe and hygienic.

Opalware sets are high grade non-toxic (lead-free) sets making them extremely safe for health.

Opalware sets are resistant to thermal shock which makes them safe.

Another important aspect is that they undergo a regular test to make sure it is safe for health.



# Opalware

## 28 Pcs Dinner Set

10" FULL PLATE-	6 PIECES
7.5" SIDE PLATE-	6 PIECES
4.5" VEG BOWL-	6 PIECES
5" SOUP BOWL-	6 PIECES
7" SERVING BOWL-	2 PIECES
8" SERVING BOWL-	1 PIECE
13" OVAL RICE PLATE-	1 PIECE



GREEN LILY

673001



AGERIA

673001



MILLENIA

673001



# Opalware

## 28 Pcs Dinner Set

10" FULL PLATE-	6 PIECES
7.5" SIDE PLATE-	6 PIECES
9" SOUP PLATE -	6 PIECES
5" SOUP BOWL-	6 PIECES
7" SERVING BOWL-	2PIECES
8" SERVING BOWL-	2 PIECES



BORO  
673002



BLUE GREY

673002



PENTAS PEACH

673002



# Opalware

## 40 Pcs Dinner Set

10" DINNER PLATE- 6 PIECES

7.5" SIDE PLATE- 6 PIECES

9" SOUP PLATE- 6 PIECES

5" BOWL- 6 PIECES

6.5" BOWL- 2 PIECES

8" SERVING BOWL- 1 PIECE

13" OVAL RICE PLATE- 1 PIECE

22cl CUP AND SAUCER- 12PIECES



BLUE TULIP

673003



ARROW

673003



BLAZE

673003



6792



GOLD ARABIC



6740



6802



ROSE



GOLD FLOWER



ZEBRA



# Trays



# Trays



- Serving trays are very important functional items usually used to carry plates of food and dishes to diners.
- This is the reason why they must be able to deal with relatively heavy weight, be completely flat and include a lip or ledge to keep the items in place.
- The vast majority of serving trays have handles that come in the form of lips or ears and have finger holes (even though some of them don't have such holes).
- In the past, serving trays were found and used in big houses to carry food from the kitchen to the dining area.
- The majority of rectangular trays were made to follow the length of people's shoulders, so the carrier could go through a doorway without the need to turn.
- This is quite natural because they used serving trays for carrying jugs of water and wine, bowls of veggies and fruits, platters of meats, toast rack and tureens and any drop or spillage could cause a huge problem.
- Serving trays in the past were often a sign of rank and position in society because many of them were personalised and people could recognise the specific style of trays and associate them with certain nobility and royalty.



# Trays



112-25-16



112-25-15



112-25-25



924767



112-25-31



924767

Dollarama RTG  
Rattan Tray



112-25-05

Ds-Fusion-Tray-Large



924767



112-25-31

Tray-long-small-faux



112-25-31



112-24-79



112-25-29

Tray-oval chip &  
dip-divine



112-25-14

Tray-Dyna-Med



M.BLUE

112-24-79

Tray-oval chip &  
dip



M.BLUE

112-24-80

Tray-long-small  
-M.Blue



PERSIAN

112-25-24

Bowl-3-Section  
-Sauce-Divine



DIVINE

112-25-23

Bowl-3-Section  
-Sauce-Divine



PINK



PINK

112-24-129

Tray-Elegant-  
Medium -Pink



PERSIAN

112-25-30

Tray-oval chip &  
dip-Persian



M.GREY

112-24-105

Tray-oval chip &  
dip-Grey



M.GREY



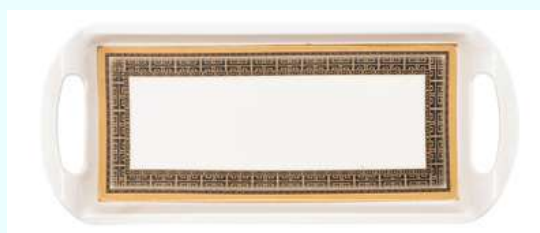
FAUX



112-25-23



M.GREY



M.GREY



BLACK



112-25-05

Tray-Hammer-Big



112-25-13

Tray-Dyna-Big



112-25-41

Tray-Comfart-XL



112-25-39A

Tray-Elegant  
-Small



112-25-40

Tray-Elegant-Large



114-25-06

DS Fusion Tray  
Medium



112-25-06

Tray-Hammer-Med



112-25-07

Tray-Hammer  
-Small





112-25-20

TRAY-ARENA-SMALL

---



112-25-19

TRAY-ARENA-MED

---



112-25-15

TRAY-DYNA-SMALL

---



112-25-11

TRAY-COMFART  
-SMALL

---



112-25-10

TRAY-COMFART  
-MED

---



112-25-09

TRAY-COMFART  
-BIG

---



112-25-37

TRAY-ELLORA-LARGE  
-VECTORE

---



112-25-17

TRAY-LONG-MED

---



112-25-16

TRAY-LONG-BIG

---



114-25-10

DS ORCHID TRAY  
SMALL



114-25-09

DS ORCHID TRAY  
MED



114-25-08

DS ORCHID TRAY  
LARGE



114-25-04

DS PICES TRAY  
MINI



114-25-03

DS PICES TRAY  
SMALL



114-25-02

DS PICES TRAY  
MED



114-25-01

DS PICES TRAY  
BIG



114-25-13

DS VOGUE TRAY  
SMALL



1670-95-09



Y012614

sz:38.1×27×3.3cm



Y012621

sz:35.5×24.2×2.6cm



Y012616

sz:33×24.7×3.2cm



Y012597

sz:40×39.5×3.2cm



Y012598

sz:35×34.5×2.8cm



112-24-58

Rectangle 10.2"

# Kids Plates



112-24-59

Round 10"



# Glassware



# Glassware



- Glass is an immensely versatile material; it is used every day in numerous applications, many that most of us are not even aware of.
- We use it to drink beverages, to store food, and as windows in our homes and automobiles but glass is also used in many unseen applications.
- The history of glass dates back to 3500 BC in Mesopotamia.
- The term Glass was first developed during the late Roman empire.
- Glass is hard, amorphous, inert, biologically inactive, fragile and transparent.
- A glass kiln will have heating elements.



4000-196-01A

6PCS CUP+GOLD  
PLATE



4000-207-21

ARABIC CUP



KZ016

ARABIC CUP - 6 PCS



67420

BAKING DISH-  
GLASS OVAL- 0.7L



4000-206-22

BOWL SET-FROST-2PC



67422

BAKING DISH-  
GLASS OVAL- 3L



67417

BAKING DISH-  
GLASS 1L



67418

BAKING DISH-  
GLASS 1.6L



4000-205-24

CANDY JAR



4000-35-17

CANDY JAR  
#TG1427-BLACK



012803

CANDY JAR



KFB85TSWD42-6

CUP & SAUCER  
(6PC/SET)



KZ013

GLASS BOTTLE



KZ023

BOWL SET- GOLD



GLASS CAN



KZ028

GLASS CAN



KZ029

GLASS CAN -2PC



67408

GLASS CNTR W/  
BAMBOO LID REC -  
4010ML



67406

GLASS CNTR W/  
BAMBOO LID RECT -  
370ML



67410

GLASS CNTR W/  
BAMBOO LID RND -  
650ML



67412

GLASS CNTR W/  
BAMBOO LID SQ -  
320ML



67413

GLASS CNTR W/  
BAMBOO LID SQ -  
520ML



LHB-KR-410-PINK

GLASS CNTR-  
ROUND - 410ML



I012727

INSTA JAR  
800ML#DBN-1763



KZ022

GLASS DISH  
#JXMY252



I012728

INSTA JAR 800ML  
2PCS SET#DBN-1763



I012727

INSTA JAR  
800ML#DBN-1763



KZ022

GLASS DISH  
#JXMY252



I012728

INSTA JAR 800ML  
2PCS SET#DBN-1763



I012727

INSTA JAR  
800ML#DBN-1763



KZ022

GLASS DISH  
#JXMY252



I012728

INSTA JAR 800ML  
2PCS SET#DBN-1763



I012727

INSTA JAR  
800ML#DBN-1763



KZ022

GLASS DISH  
#JXMY252



I012728

INSTA JAR 800ML  
2PCS SET#DBN-1763



4000-205-03

GLASS BOWL  
W/HANDLE -2PC

---



4000-206-26

LUNCH BAG W/2  
GLASS CNTR

---



3000-239-35

GLASS BOWL-4 PCS

---



3000-239-36

GLASS BOWL- 6 PCS

---



3000-239-37

GLASS BOWL-4 PCS

---



3000-239-38

GLASS BOWL- 6 PCS

---



4000-205-14

GLASS SALAD BOWL

---

BT-1-LB

GLASS SALAD BOWL  
-850+1550+2700 #SK-1LB

---



KZ030

GLASS JAR-3PCS

---

BT-3-BW

GLASS SALAD BOWL  
-850+1550+2700 #SK-3BW

---



3000-239-23

GLASS JAR+GLASS-3PCS/SET

---

BT-2-DB

GLASS SALAD BOWL  
-850+1550+2700 #SK-2-DB

---



# Ceramic Items



# Ceramic Items



- Ceramic is produced by burning clay at high temperatures. Ceramics are found everywhere.
- Ceramic products are used in everyday life. These are brittle, non-compressible and hard in nature.
- Ceramic cookware is also used for baking and roasting. Most of the people prefer ceramic cookware because these utensils can be used for dry and wet cooking.
- Additionally, they are non-sticky and prevent the burning of food. After use, they can be cleaned easily.
- Ceramic has been in use for over millions of years and is found healthy and safe for food.
- It has been observed that ingredients that form ceramic are considered non-toxic.
- Ceramic dishes are heat friendly. Ceramic crockery is proven to be non-sticky.
- They have a smooth glassy texture that helps clean the dishes easily.



4000-196-23

CERAMIC-3PCS BOWL  
W/WOODSTAND



4000-196-37

CERAMIC-4PCS CUP  
W/GLASS COVER



KZ010

CERAMIC BOWL  
-3PCS



4000-196-31

CERAMIC DINNER  
SET-16PC



4000-196-32

CERAMIC DINNER  
SET-16PC



4000-185-04

CERAMIC -3PCS  
BOWL W/STAND



4000-196-13

CERAMIC -3PCS  
BOWL W/STAND



4000-196-43

CERAMIC -3PCS  
BOWL W/STAND



4000-185-03

CERAMIC -3PCS  
PLATE W/STAND



4000-196-25

CERAMIC - 3PCS  
TRAY W/STAND



4000-196-40

CERAMIC - 3PCS  
:TRAY W/W.STAND



4000-196-39

CERAMIC - 4PCS  
:BOWL W/W.STAND



4000-196-38

CERAMIC - 6PCS  
CUPS W/W.STAND



4000-185-01

CERAMIC - BOWL  
W/ METAL STAND



4000-196-16

CERAMIC - BOWL  
W/ STEEL STAND



DFC-701-02

SNACK BOWL  
3 PC W/PRINT



4000-196-14

CERAMIC - DISH  
TRAY W/STAND



4000-196-15

CERAMIC - DISH  
TRAY W/STAND



4000-196-18

CERAMIC-TRAY  
SQ W/W.STAND



4000-196-20

CERAMIC-TRAY  
SQ W/W.STAND



4000-196-19

CERAMIC-TRAY  
SQ W/W.STAND



4000-196-05A

CERAMIC-TRAY-  
2 LAYER 26 CM



4000-196-06A

CERAMIC-TRAY-  
2 LAYER 26 CM



RZ001

SNACK BOWL



DFC-701-15

SNACK BOWL  
- 2 PCS



DFC-701-16

SNACK BOWL  
- 2 PCS



DFC-701-17

SNACK BOWL  
- 2 PCS



DFC-701-18

SNACK BOWL  
- 2 PCS



DFC-701-19

SNACK BOWL  
- 2 PCS



DFC-701-20

SNACK BOWL  
- 2 PCS



DFC-701-07

SNACK BOWL  
- 3 PCS



DFC-701-08

SNACK BOWL  
- 3 PCS



DFC-701-13

SNACK BOWL  
3 PC



DFC-701-10

SNACK BOWL  
- 3 PCS



DFC-701-11

SNACK BOWL  
- 3 PCS



DFC-701-14

SNACK BOWL  
3 PC



DFC-701-24

SNACK BOWL  
4 PC W SPOON



DFC-701-23

SNACK BOWL  
4 PC W SPOON



DFC-701-25

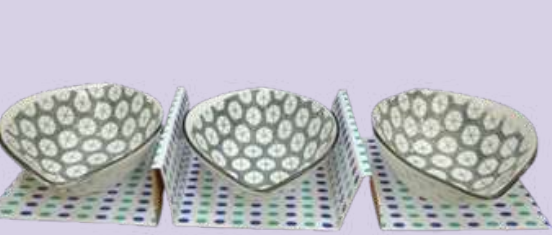
SNACK BOWL  
- 4 PCS



DFC-701-22

SNACK BOWL  
4 PC W SPOON





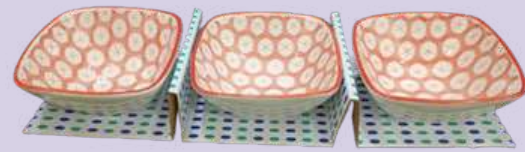
DFC-701-04

SNACK BOWL  
3 PC W/PRINT



DFC-701-06

SNACK BOWL  
4 PC W/PRINT



DFC-701-01

SNACK BOWL  
3 PC W/PRINT



DFC-701-03

SNACK BOWL  
3 PC W/PRINT





# Kitchen Utensils



# Kitchen Utensils



- Kitchen equipment is a great help in maintaining the cleanliness or orderliness in the kitchen.
  - Some of this equipment could help the cook chop, slice, and neatly mince raw ingredients.
- Cooking equipment specially made for such, and they are designed to be mess-free as well.
  - Fitting cooking equipment helps in the fast-paced processing of food.
- One of the important factors people are looking at a restaurant is the fast turnaround of their orders.
  - They came in hungry, and they would want to get their food at the soonest possible time.
- Restaurants could only do that if they have the cooking equipment that could help them deliver the food that the client has ordered.
- Using traditional or home cooking equipment could not survive the large orders, which is the reason why cooking equipment made for restaurants is the appropriate thing for food establishments.



# Kitchen Utensils



4000-07-01

FOLDING BASKET  
-20cm



4000-07-02

FOLDING BASKET  
-18cm



4000-07-05

GRATER W/WOODEN  
HANDLE



4000-97-01

GREEN TEA JAR  
- 1250ml



4000-205-09

GREEN TEA POT  
5PC



4000-07-08

CHOPPER/KNIFE/  
PEELER



4000-07-07

KNIFE-3PCS



4000-207-17

OIL BOTTLE  
300ml



4000-205-33

OIL BOTTLE  
300ml



4000-07-09

KNIFE-6PCS



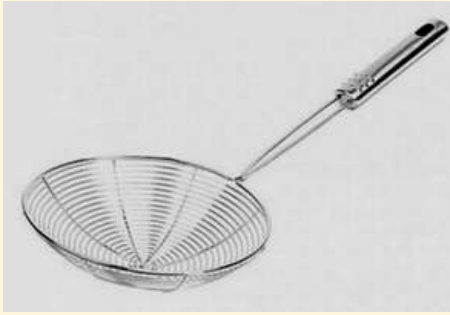
4000-205-13

HAND CHOPPER  
1.5L



4000-205-34

OIL BOTTLE  
500ml



4000-04-09

OIL STRAINER-18cm



4000-205-18

RICE SPOON



4000-207-18

OIL BOTTLE 630ml



4000-04-08

OIL STRAINER-16cm



4000-205-36

SEASONING SET



4000-132-03

SEIVER-25cm



4000-132-01

SEIVER-19cm



4000-132-02

SEIVER-22cm



4000-132-04

SEIVER-26cm



4000-205-16

SILICON BRUSH



4000-205-19

SILICON BRUSH +  
SPATULA SET



4000-205-20

SILICON BRUSH



4000-132-06

SIEVER-DOUGH  
-19.5cm



4000-132-07

SIEVER-DOUGH  
-23.5cm



4000-132-05

SIEVER-DOUGH  
-15cm



4000-132-08

SIEVER-RECTANGLE  
-33×24cm



4000-205-25

SPICE JAR SET  
6PC



4000-132-09

SIEVER-RECTANGLE  
-20×15cm



4000-117-03

S/S STEIVER SQUARE  
-24x24



4000-100-01

S/S BOTTLE- 750ml



4000-100-02

S/S BOTTLE- 1000ml



4000-98-05

S/S SEIVER- 22cm



4000-98-06

S/S SEIVER- 25cm





Thank You!

